

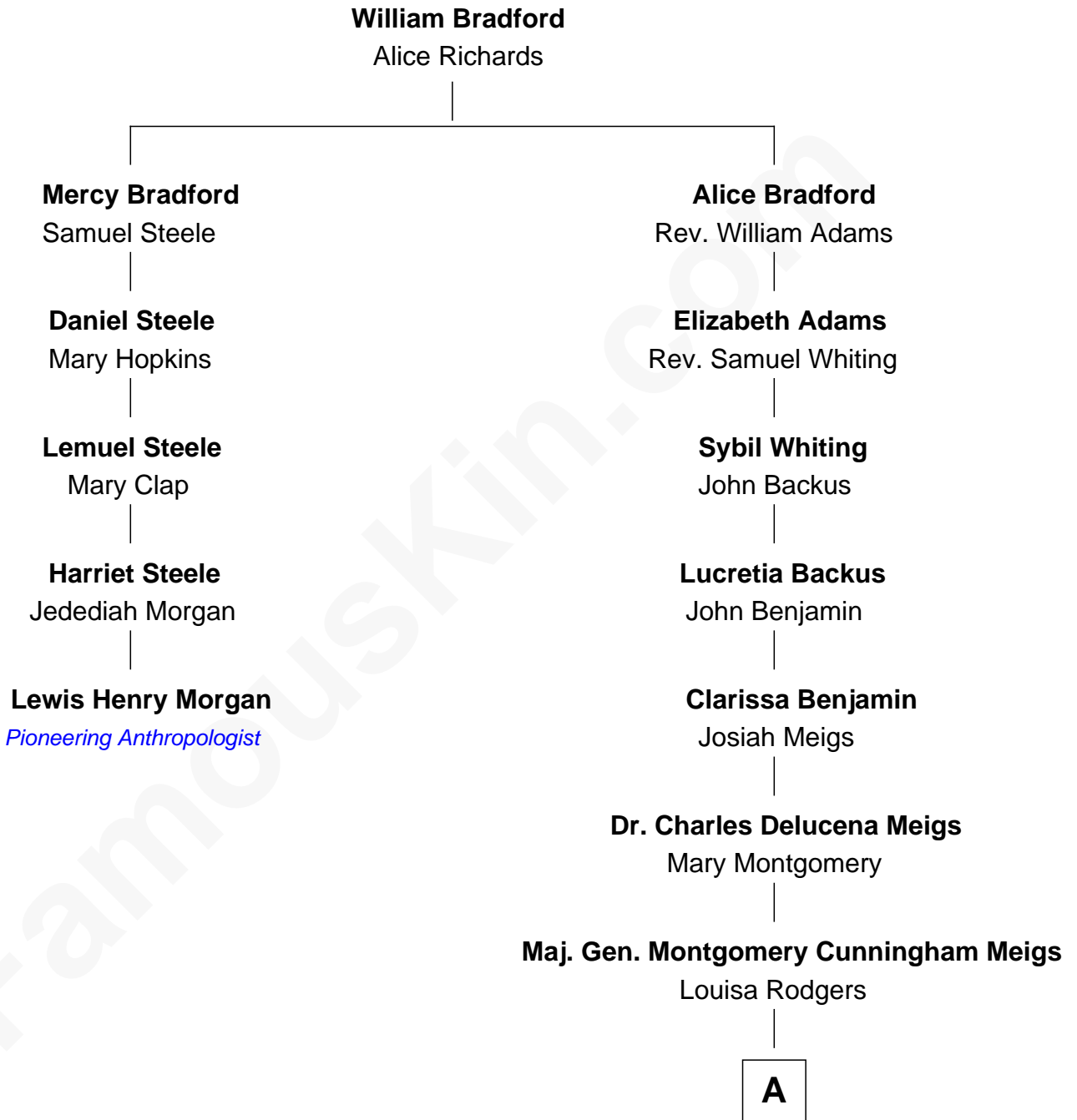


FamousKin.com Relationship Chart of

Lewis Henry Morgan
Pioneering Anthropologist

4th cousin 7 times removed of

Parker Stevenson
TV and Movie Actor



A

Mary Montgomery Meigs
Col. Joseph Hancock Taylor

Evelyn Taylor
Eli Kirk Price

Philip Price
Sarah Meade Harrison

Sarah Meade Price
Richard Stevenson Parker

Parker Stevenson
TV and Movie Actor