



# FamousKin.com Relationship Chart of

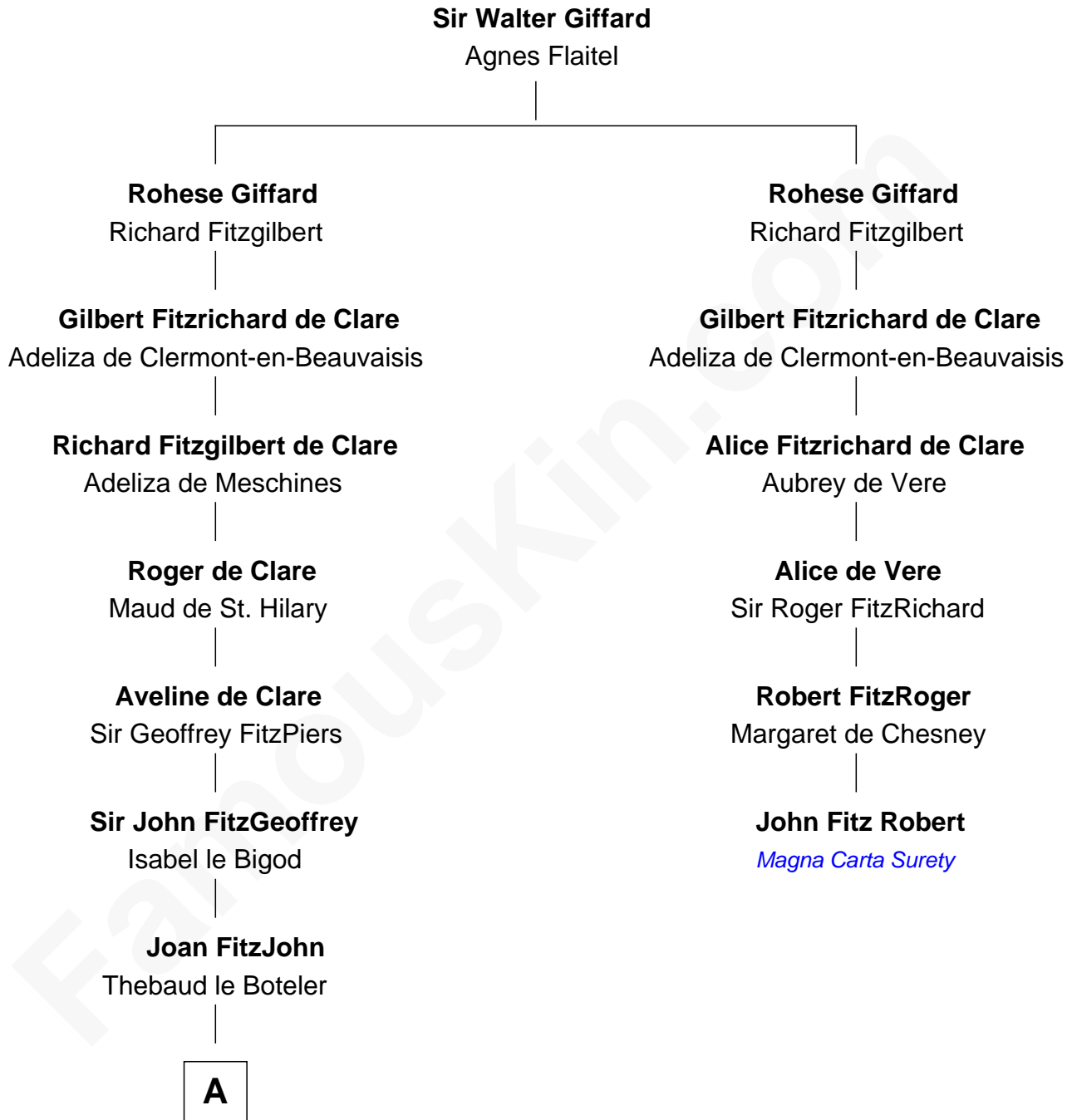
**Jonathan Swift**

*Author of Gulliver's Travels*

5th cousin 16 times removed of

**John Fitz Robert**

*Magna Carta Surety*



**A**

**Sir Edmund Boteler**

Joan FitzGerald

**Sir James le Boteler**

Eleanor de Bohun

**Pernel le Boteler**

Sir Gilbert Talbot

**Sir Richard Talbot**

Ankaret le Strange

**Mary Talbot**

Sir Thomas Greene

**Sir Thomas Greene**

Phillippa Ferrers

**Elizabeth Greene**

William Raleigh

**Sir Edward Raleigh**

Margaret Verney

**Sir Edward Raleigh**

Anne Chamberlayne

**Bridget Raleigh**

Sir John Cope

**B**

**B**

—  
**Elizabeth Cope**

John Dryden

—  
**Nicholas Dryden**

Mary Emyley

—  
**Elizabeth Dryden**

Rev. Thomas Swift

—  
**Jonathan Swift**

Abigail Erick

—  
**Jonathan Swift**

*Author of Gulliver's Travels*