

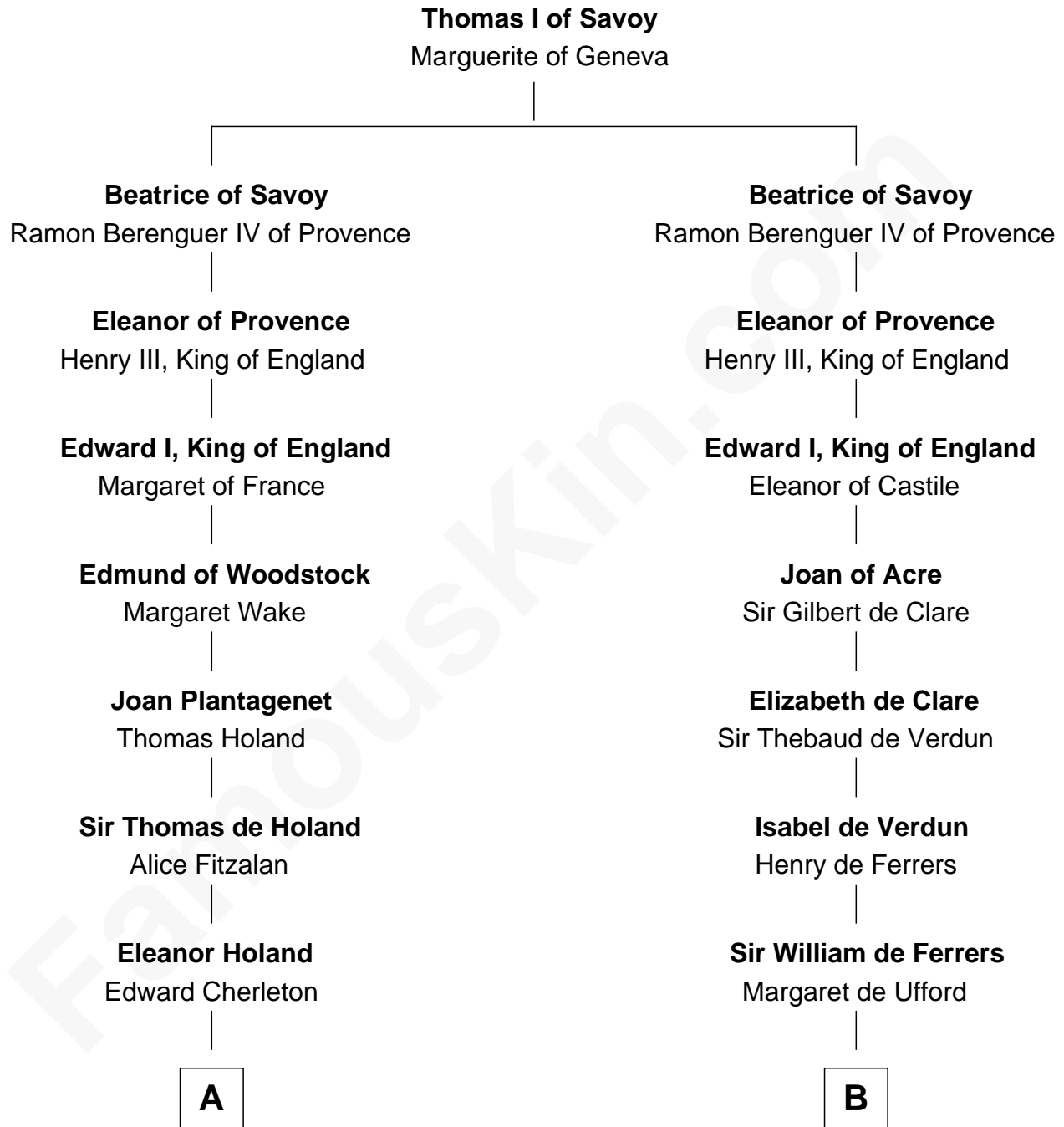


**FamousKin.com**  
**Relationship Chart of**  
**Oliver Wendell Holmes, Sr.**  
*American "Fireside" Poet*



15th cousin 5 times removed of

**Edmund Waller**  
*English Poet and Politician*





**C**

—  
**Sarah Oliver**  
Jacob Wendell

—  
**Oliver Wendell**  
Mary Jackson

—  
**Sarah Wendell**  
Rev. Abiel Holmes

—  
**Oliver Wendell Holmes, Sr.**  
*American "Fireside" Poet*

FamousKin.com