



# FamousKin.com

## Relationship Chart of

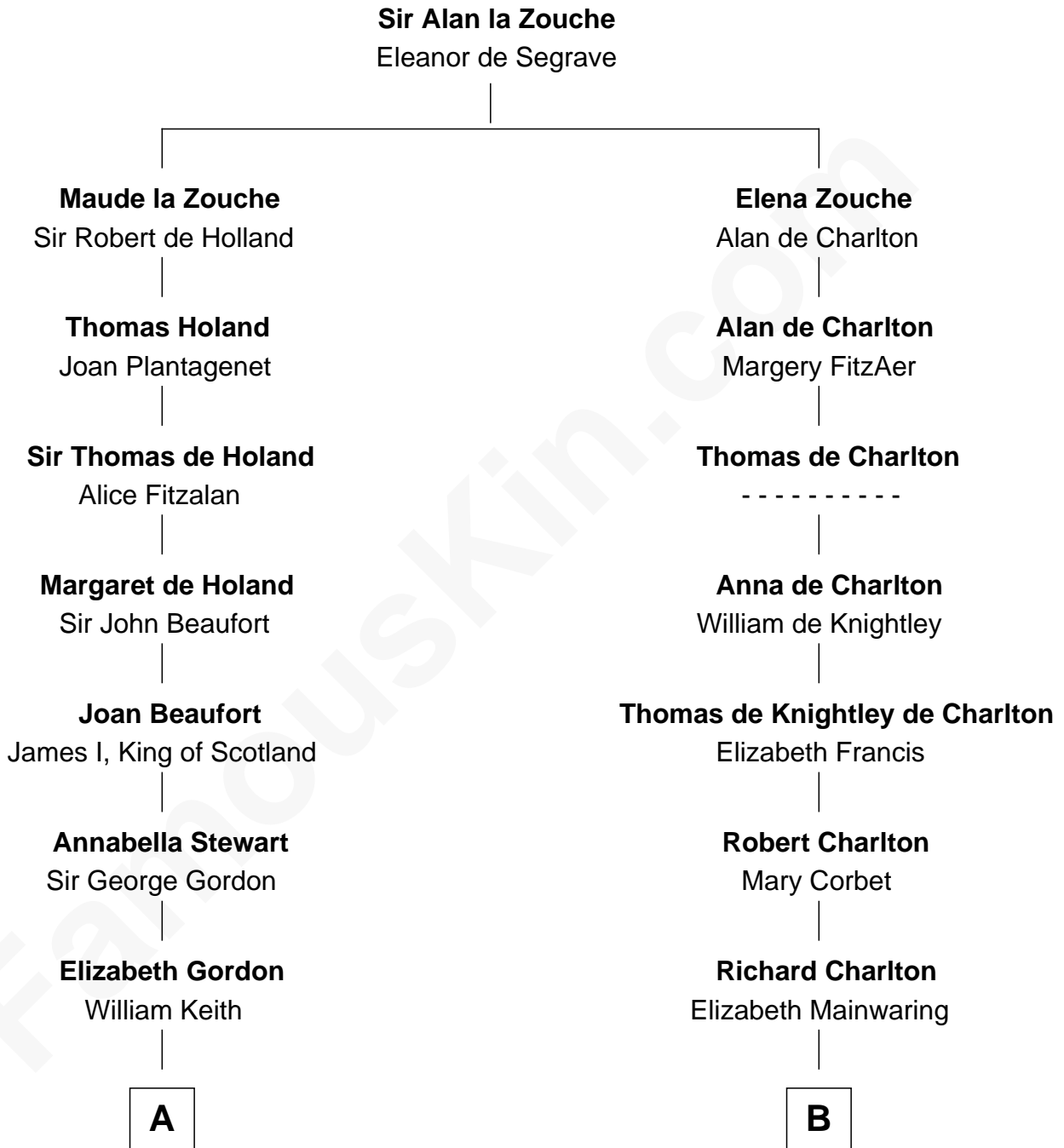
### Alan Turing

WWII Codebreaker of Nazi Enigma Machine

15th cousin 5 times removed of

### John Hancock

Signer of the Declaration of Independence





**C**

—  
**Jean Stewart Fraser**

John Robert Turing

—  
**Rev. John Robert Turing**

Fanny Montague Boyd

—  
**Julius Matheson Turing**

Ethel Sara Stoney

—  
**Alan Turing**

*WWII Codebreaker of Nazi Enigma Machine*

FamousKin.com