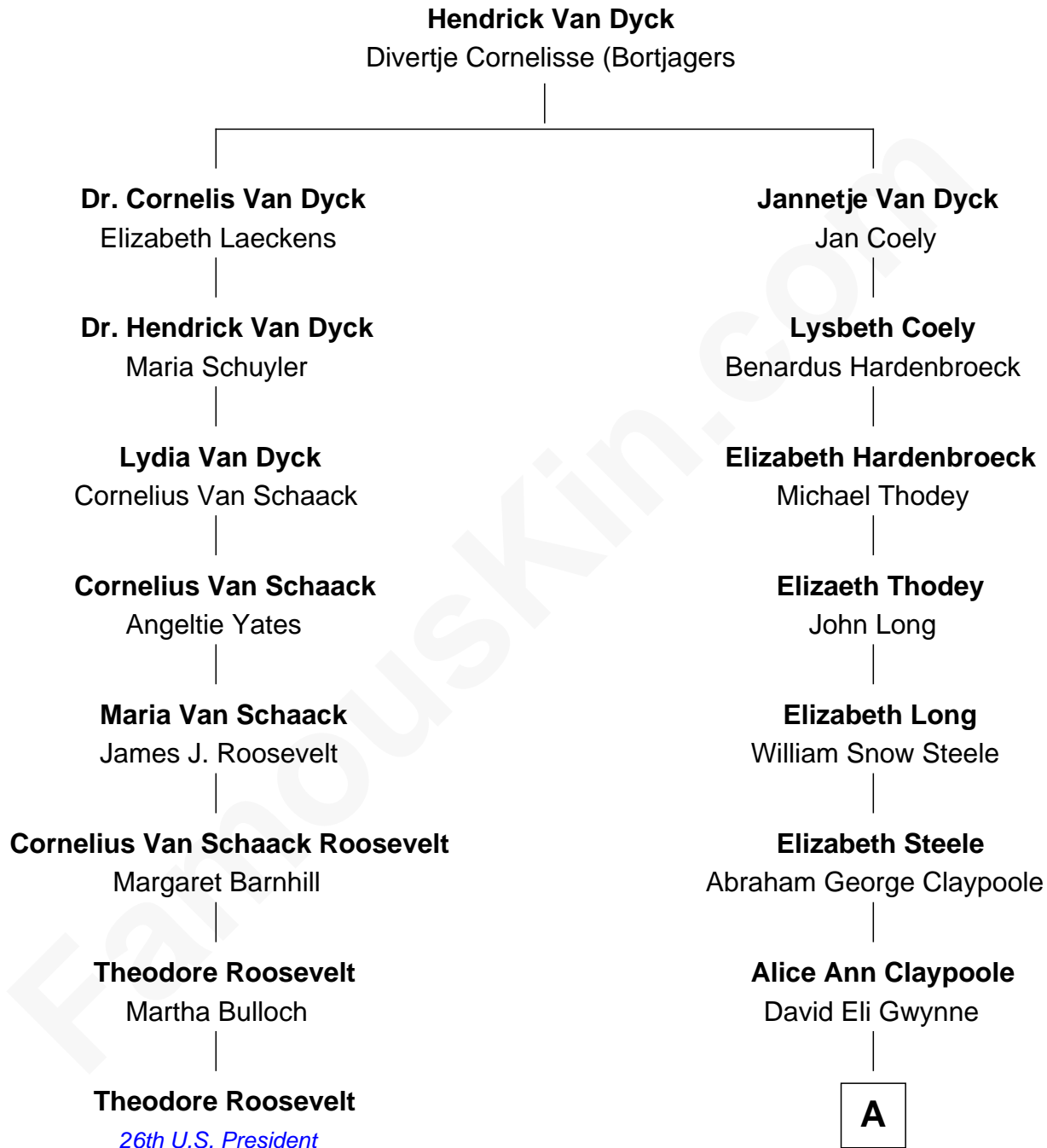




**FamousKin.com**  
**Relationship Chart of**  
**Theodore Roosevelt**  
*26th U.S. President*



7th cousin 4 times removed of  
**Anderson Cooper**  
*Television Journalist*



A

**Abraham Evan Gwynne**

Rachel Moore Flagg

**Alice Claypoole Gwynne**

Cornelius Vanderbilt

**Reginald Claypoole Vanderbilt**

Gloria Maria Mercedes Morgan

**Gloria Laura Morgan Vanderbilt**

Wyatt Emory Cooper

**Anderson Cooper**

*Television Journalist*